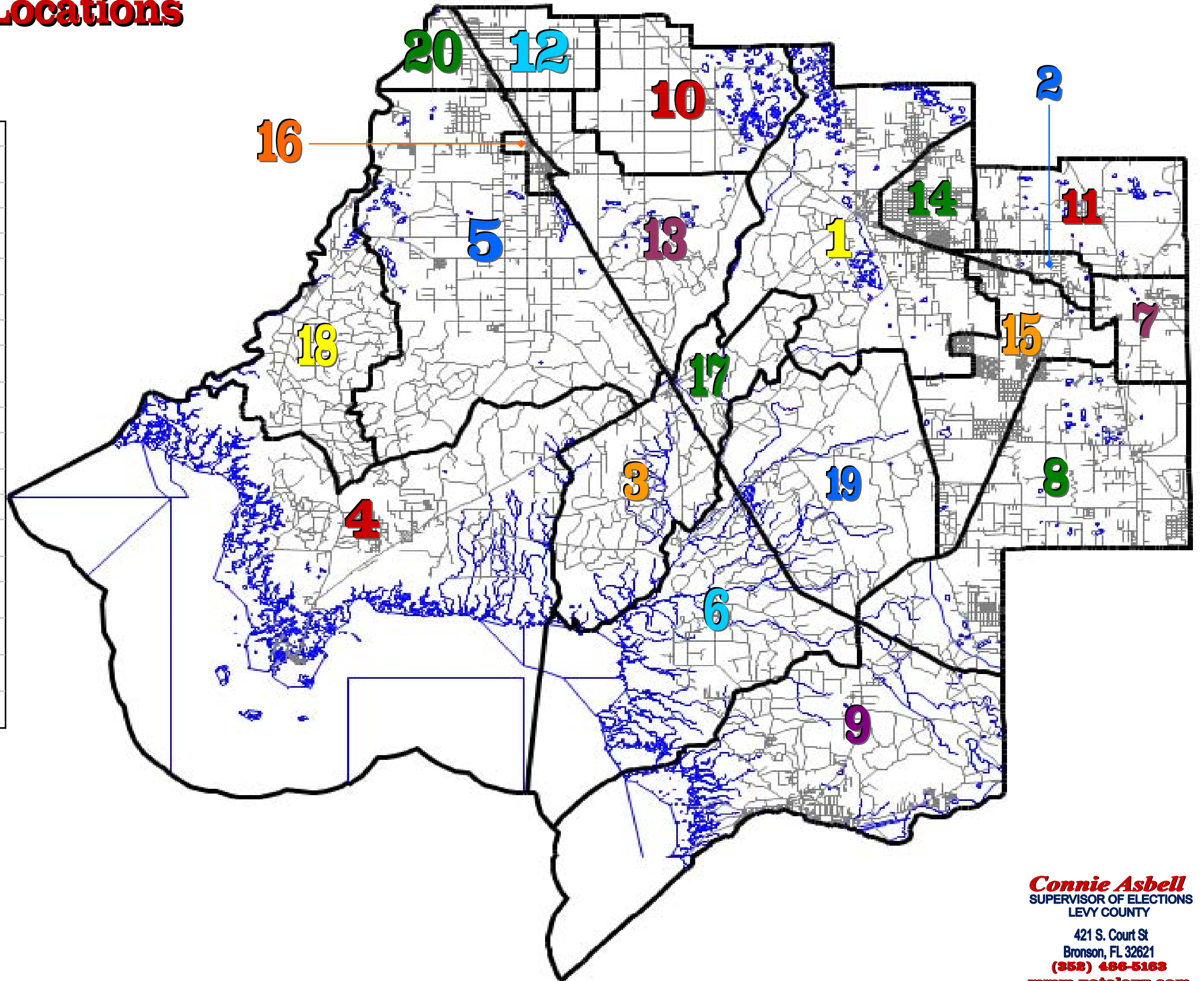


Precincts & Voting Locations

Levy County

1	Bronson I	660 E Hathaway Ave	Bronson
2	Williston Highlands I	17531 NE Hwy 27 Alt	Williston
3	Otter Creek I	551 SW 2 nd Ave	Otter Creek
4	Cedar Key	490 2 nd St	Cedar Key
5	Willow Sink	6731 NW 100 th St	Chiefland
6	Gulf Hammock I	2852 SE CR 326	Gulf Hammock
7	Williston	46 NW Main St	Williston
8	Morrison	20291 SE 33 rd St	Morrison
9	Inglis – Yankeetown	137 Hwy 40 W	Inglis
10	Judson	16655 NW CR 339	Trenton
11	Raleigh	18680 NE 75 th St	Williston
12	Fanning Springs I	17651 NW 90 th Ct	Fanning Springs
13	Chiefland I	506 SW 4 th Ave	Chiefland
14	Bronson II	660 E Hathaway Ave	Bronson
15	Williston Highlands II	17531 NE Hwy 27 Alt	Williston
16	Chiefland II	506 SW 4 th Ave	Chiefland
17	Otter Creek II	551 SW 2 nd Ave	Otter Creek
18	Fowlers Bluff	4591 NW CR 347	Chiefland
19	Gulf Hammock II	2852 SE CR 326	Gulf Hammock
20	Fanning Springs II	17651 NW 90 th Ct	Fanning Springs



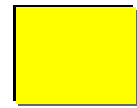
The following Precincts vote at the
SAME POLLING LOCATION

1 & 14 6 & 19
 2 & 15 13 & 16
 3 & 17 12 & 20

Connie Asbell
 SUPERVISOR OF ELECTIONS
 LEVY COUNTY
 421 S. Court St
 Bronson, FL 32621
 (352) 486-5163
www.votelevy.com

Board of County Commissioners

Levy County



District 1

Mike Joyner (R)
PO Box 271
Morriston, FL 32668
(352) 529-7241



District 2

Owen Johnson (R)
PO Box 1088
Chiefland, FL 32644
(352) 490-9160



District 3

Marsha Drew (R)
6 Magnolia Ave
Yankeetown, FL 34498
(352) 447-5827



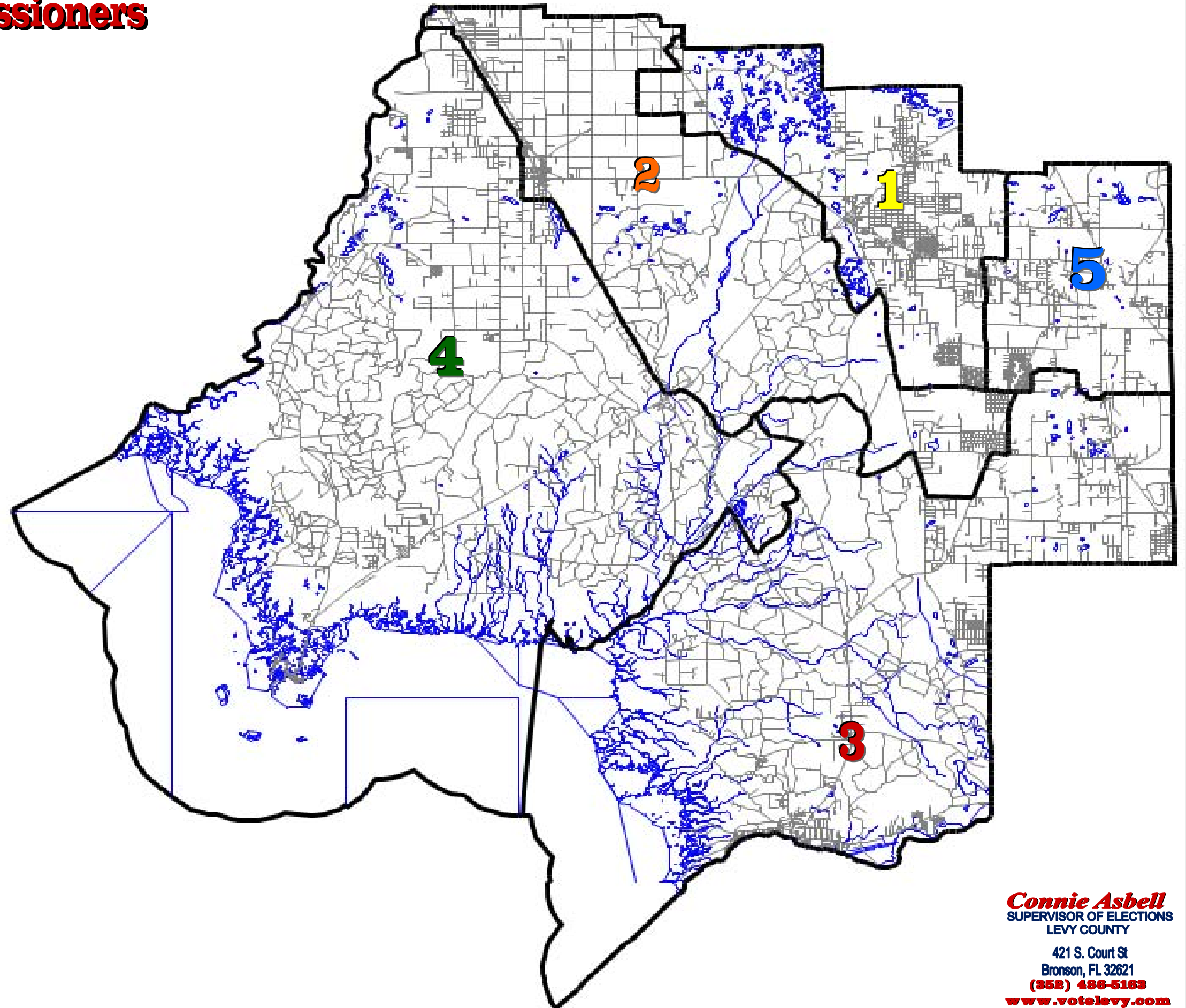
District 4

Ryan Bell (R)
13 NE 3rd St
Chiefland, FL 32626
(352) 493-4492



District 5

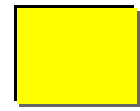
Danny Stevens (D)
PO Box 776
Williston, FL 32696
(352) 528-5731



Connie Asbell
SUPERVISOR OF ELECTIONS
LEVY COUNTY
421 S. Court St
Bronson, FL 32621
(352) 486-5163
www.votelevy.com

School Board Districts

Levy County



District 1

Cameron Asbell (NP)
11751 NE 107th Pl
Archer, FL 32618
(352) 486-7007



District 2

Beth Davis (NP)
16971 SW 133rd St
Cedar Key, FL 32625
(352) 543-5568



District 3

Robert Philpot (NP)
PO Box 68
Williston, FL 32696
(352) 528-4094



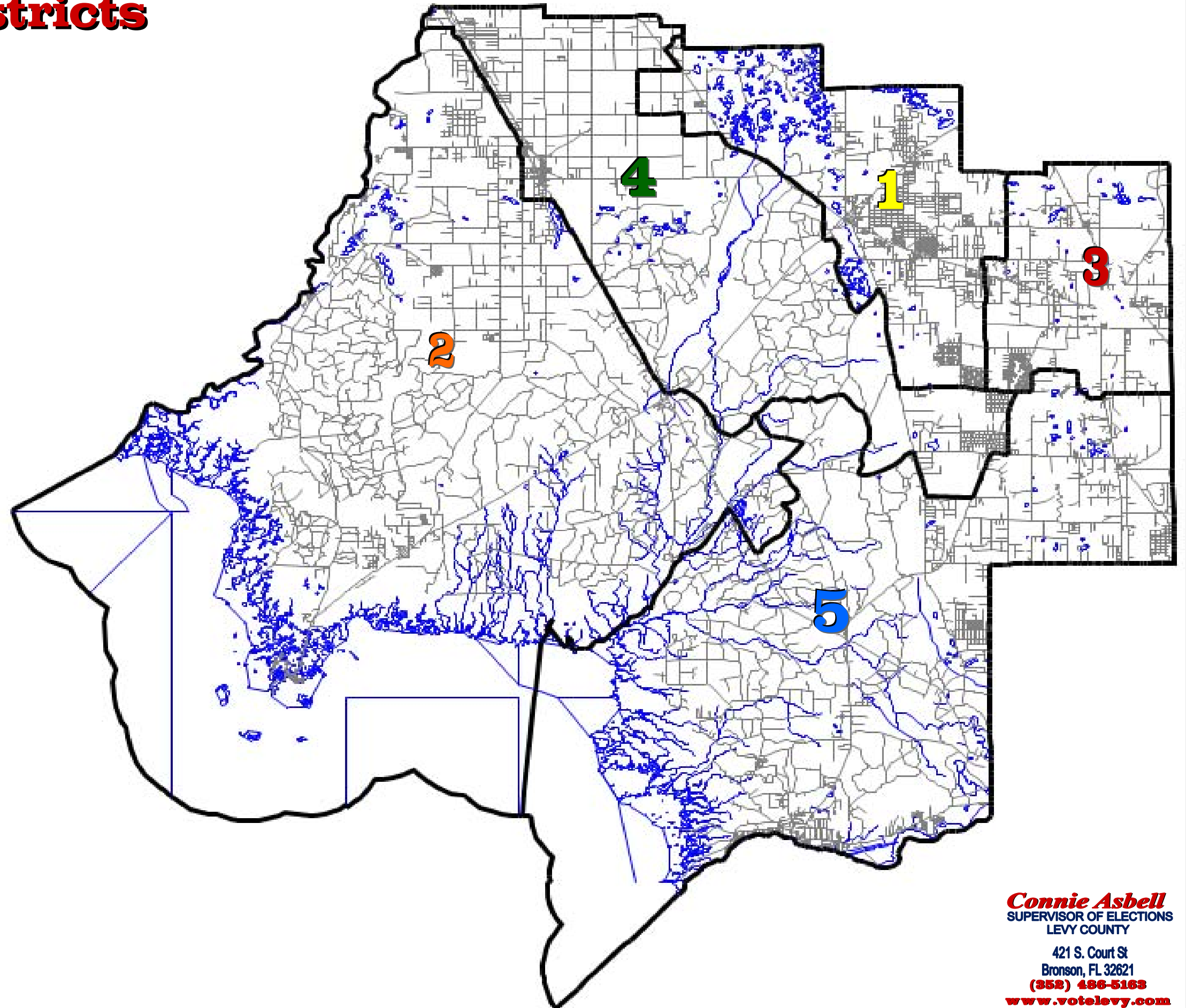
District 4

Paige Brookins (NP)
PO Box 1662
Chiefland, FL 32644
(352) 490-9503



District 5

Rick Turner (NP)
16930 NE 10th St
Williston, FL 32696
(352) 528-5073



Connie Asbell
SUPERVISOR OF ELECTIONS
LEVY COUNTY
421 S. Court St
Bronson, FL 32621
(352) 486-5163
www.votelevy.com

Congressional Districts

Levy County



District 5

Richard Nugent (R)

1517 Longworth HOB
Washington, DC 20515
Phone: 202-225-1002
Fax: 202-226-6559

District Office

16224 Spring Hill Dr
Brooksville, FL 34604
Phone: 352-799-8354
Fax: 352-799-8776



District 6

Cliff Stearns (R)

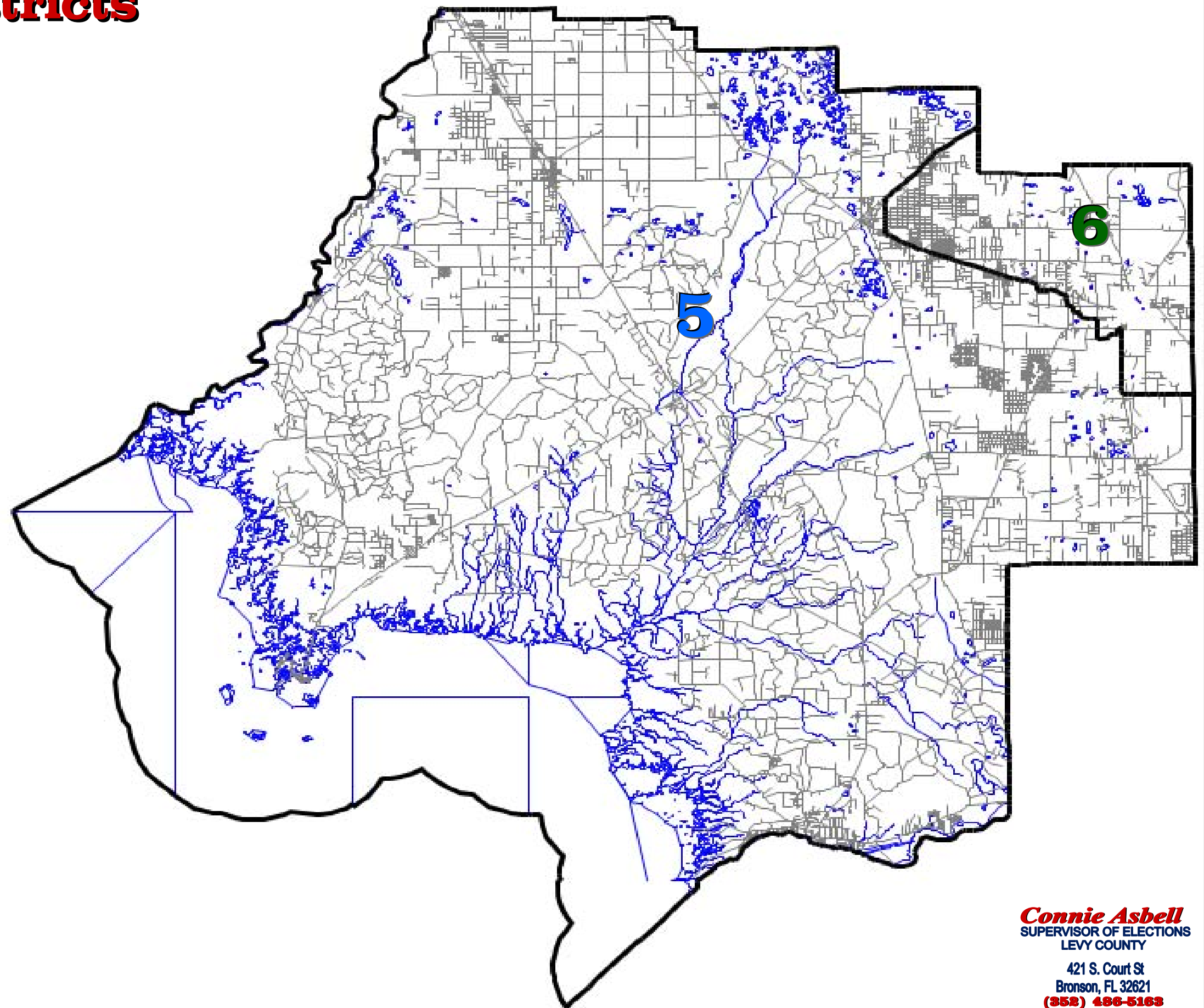
2306 Rayburn HOB
Washington D.C. 20515
Phone: 202-225-5744
Fax: 202-225-3973

District Office

115 SE 25th Ave
Ocala, FL 34471
Phone: 352-351-8777

Toll Free

1-800-888-7743



Connie Asbell
SUPERVISOR OF ELECTIONS
LEVY COUNTY
421 S. Court St
Bronson, FL 32621
(352) 486-5163
www.votelevy.com

State Senator Districts

Levy County



District 3

Charlie Dean (R)

404 S Monroe St, Suite 302

Tallahassee, FL 32399

Phone: 850-487-5017

District Office

415 Tompkins St.

Inverness, FL 34450

Phone: 352-860-5175



District 14

Steve Oelrich (R)

404 S Monroe St, Suite 418

Tallahassee, FL 32399

Phone: 850-487-5020

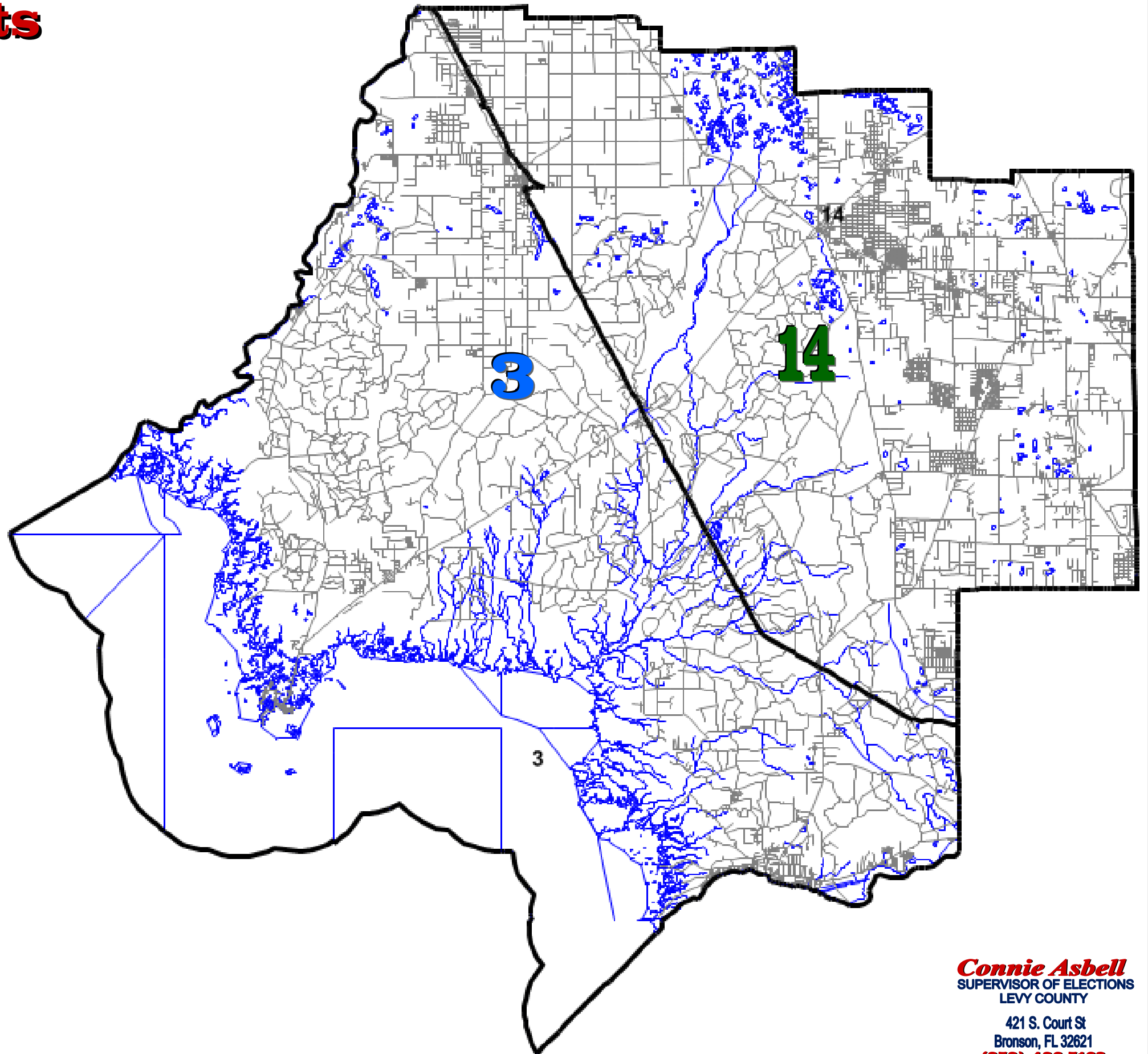
District Office

4131 NW 28th Ln, Suite 7

Gainesville, FL 32606

Phone: 352-375-3555

Fax: 352-955-6262



Connie Asbell
SUPERVISOR OF ELECTIONS
LEVY COUNTY

421 S. Court St
Bronson, FL 32621

(352) 486-5163

www.votelevy.com

State House Districts

Levy County



District 10

Leonard Bembry (D)

Room 405, HOB
402 S Monroe St
Tallahassee, FL 32399-1300
Phone: 850-488-7870

District Office

304 NW Crane Ave, Bldg 36
Madison, FL 32340
Phone: 850-973-5630



District 22

Keith Perry (R)

Room 1301, CAP
402 S Monroe St
Tallahassee, FL 32399-1300
Phone: 850-488-0887

District Office

5220 SW 50th Ct.
Ocala, FL 34474-5675
Phone: 352-873-6564



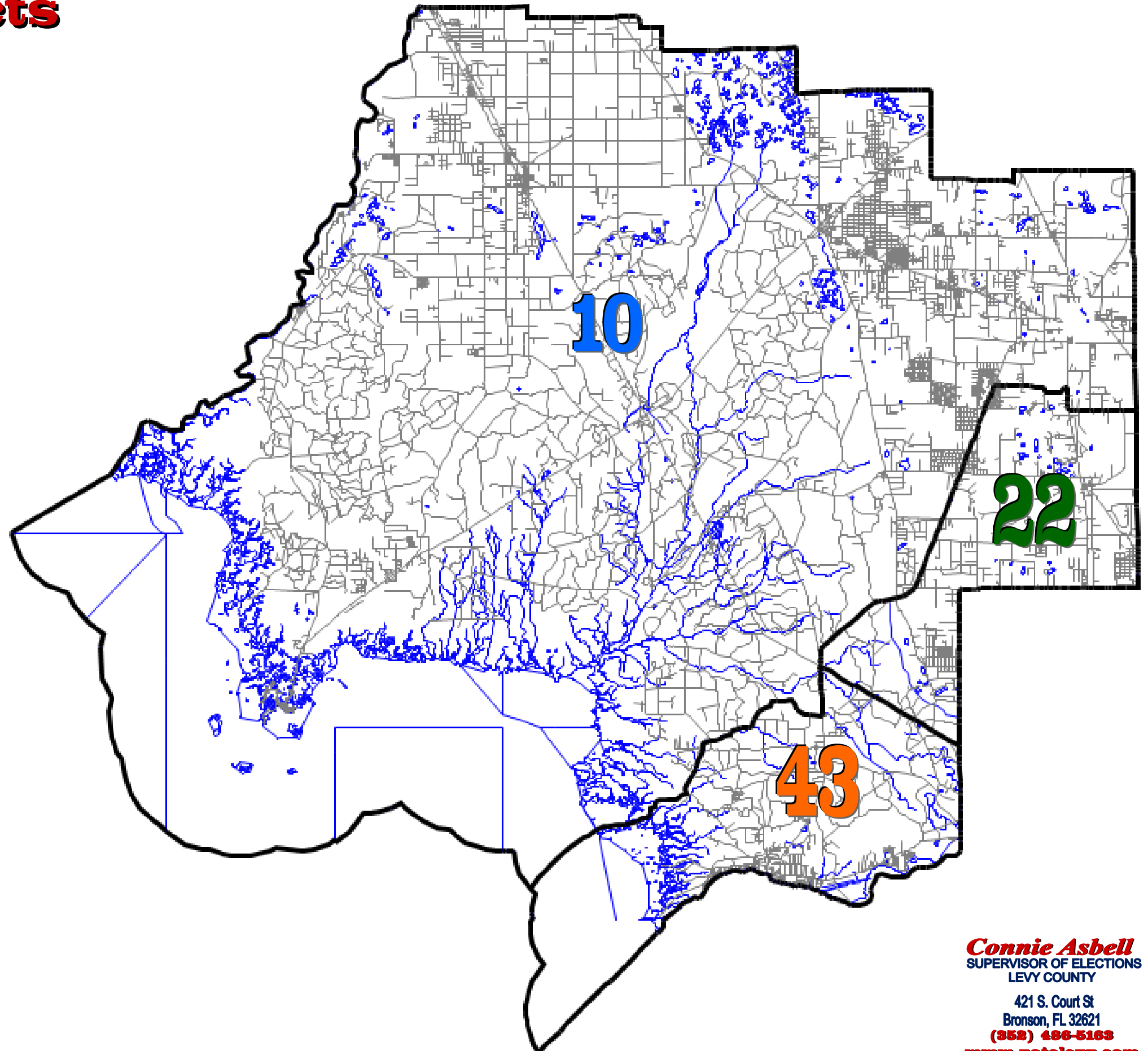
District 43

Jimmie T. Smith (R)

Room 1003, CAP
402 S Monroe St
Tallahassee, FL 32399-1300
Phone: 850-488-0805

District Office

591 E. Gulf to Lake Hwy.
Lecanto, FL 34461-9392
Phone: 352-560-6020



Connie Asbell
SUPERVISOR OF ELECTIONS
LEVY COUNTY
421 S. Court St
Bronson, FL 32621
(352) 486-5163
www.votelevy.com